

park folding

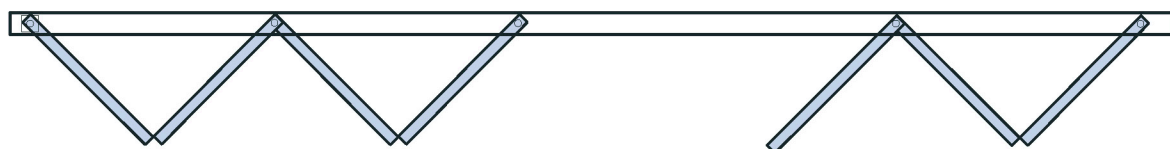
PA-250

Sistema per pareti scorrevoli a libro con profili superiori e inferiori, con guida a pavimento.

Sliding folding system with top/bottom profiles for glass doors, with bottom guide channel.

Faltschiebewandsystem, mit Profile oben/unten mit Bodenführung.



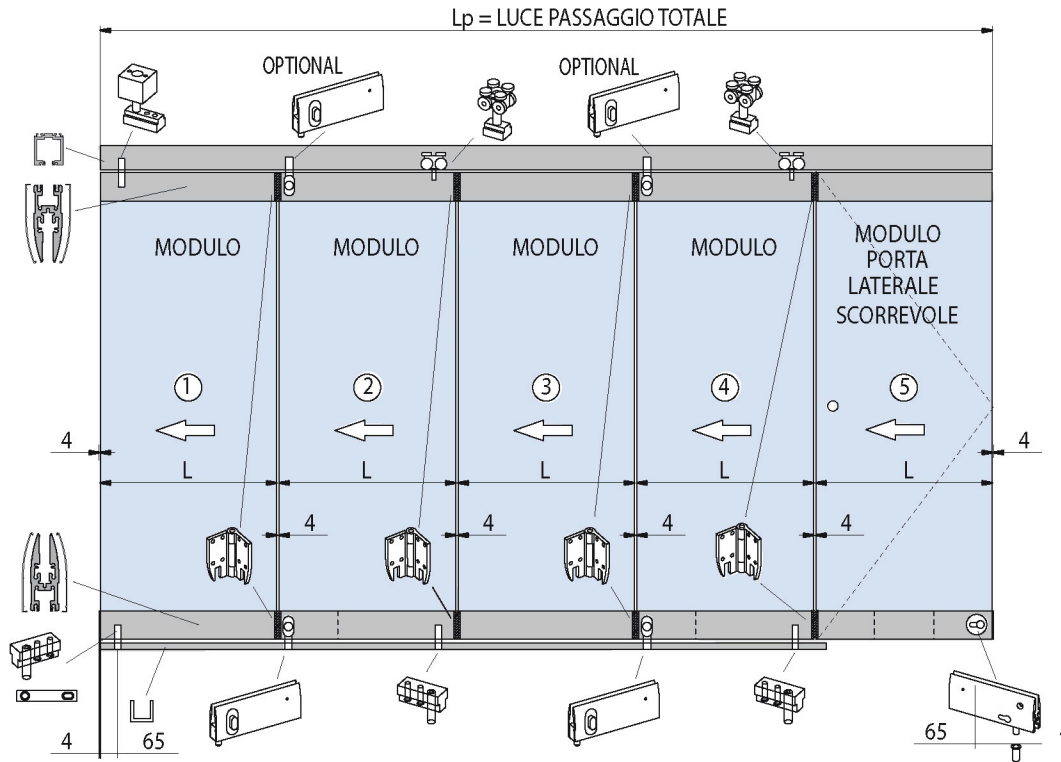


■
Con guida a pavimento.
With bottom guide channel.
Mit Bodenführung.

■
Le dimensioni massime di ogni anta sono 1000 x 3000,
per massimo 5 ante per lato, quindi 10 ante totali.
The maximum dimensions of every panel are 1000 x 3000,
for maximum 5 panels for side therefore 10 panels totals.
Max Falftügelgrößen sind: max. Flügelbreite 1000, max
gesamthöhe 3000, Max Falftügel pro seite so insgesamt
10 Falftügel möglich.

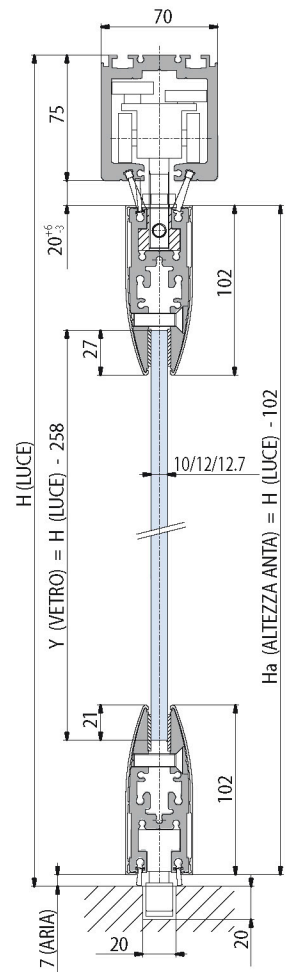
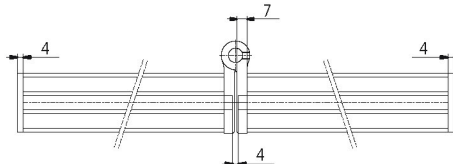
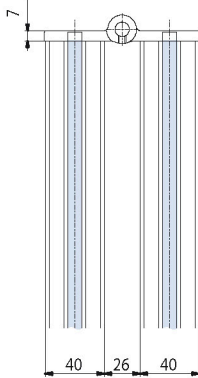
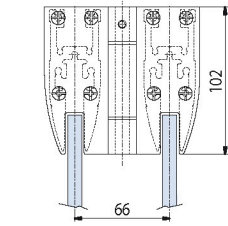
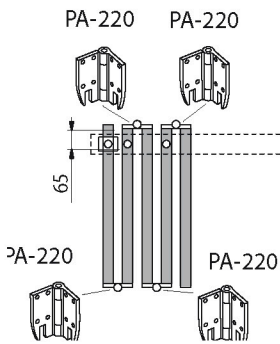
■
Spessore vetro: 10/12/12,7 mm.
Glass thickness: 10/12/12,7 mm.
Glas: 10/12/12,7 mm.

park folding PA-250



$$Y \text{ (Vetro)} = H \text{ (Luce)} - 258$$

$$Ha \text{ (Altezza Anta)} = H \text{ (Luce)} - 102$$



Y = Altezza vetro
Glass height
Glashöhe

Ha = Altezza anta
Panel Height
Flügelhöhe

H = Luce netta altezza passaggio
Clear opening height
Lichte Durchgangshöhe

Regolazione totale (vetro ed anta)
in altezza: + 10 / - 8

Vertical adjustment (glass and panel)
+ 10 / - 8

Höhenregulierung (Glas und Element)
+ 10 / - 8

H&M

scarrevoji
a parcheggio

